

Joe Baca Middle School

Bloomington, CA

Lighting System

Pole / Fixture Summary						
Pole ID	Pole Height	Mtg Height	Fixture Qty	Luminaire Type	Load	Circuit
P1-P2	60'	60'	5	TLC-LED-900	4.45 kW	A
P3	80'	80'	5	TLC-LED-1500	7.15 kW	A
		80'	1	TLC-LED-400	0.40 kW	A
P4-P5, P8	80'	80'	1	TLC-LED-900	0.89 kW	A
		80'	7	TLC-LED-1500	10.01 kW	A
P6	80'	80'	6	TLC-LED-1500	8.58 kW	A
		80'	1	TLC-LED-900	0.89 kW	A
P7	80'	80'	3	TLC-LED-1500	4.29 kW	A
		80'	2	TLC-LED-900	1.78 kW	A
P9	80'	80'	4	TLC-LED-1500	5.72 kW	A
		80'	2	TLC-LED-400	0.80 kW	A
9			56		69.43 kW	

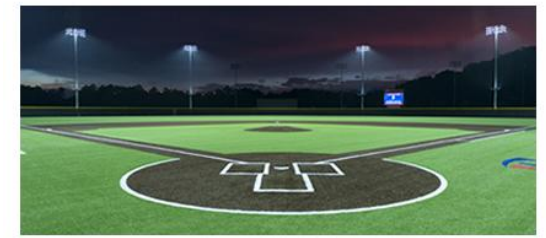
Circuit Summary			
Circuit	Description	Load	Fixture Qty
A		69.43 kW	56

Fixture Type Summary							
Type	Source	Wattage	Lumens	L90	L80	L70	Quantity
TLC-LED-1500	LED 5700K - 75 CRI	1430W	160,000	>120,000	>120,000	>120,000	39
TLC-LED-900	LED 5700K - 75 CRI	890W	89,600	>120,000	>120,000	>120,000	14
TLC-LED-400	LED 5700K - 75 CRI	400W	46,500	>120,000	>120,000	>120,000	3

Light Level Summary

Calculation Grid Summary								
Grid Name	Calculation Metric	Illumination					Circuits	Fixture Qty
		Ave	Min	Max	Max/Min	Ave/Min		
Spill Grid	Horizontal	0.22	0	0.76	6822.34		A	56
Spill Grid	Max Candela (by Fixture)	18048	202	65725	325.99	89.52	A	56
Spill Grid	Max Vertical Illuminance Metric	0.51	0	1.59	1502.74		A	56
Sports Field	Horizontal	29.5	17	41	2.49	1.74	A	56

From Hometown to Professional



We Make It Happen.

Not to be reproduced in whole or part without the written consent of Musco Sports Lighting, LLC. ©1981, 2022 Musco Sports Lighting, LLC.

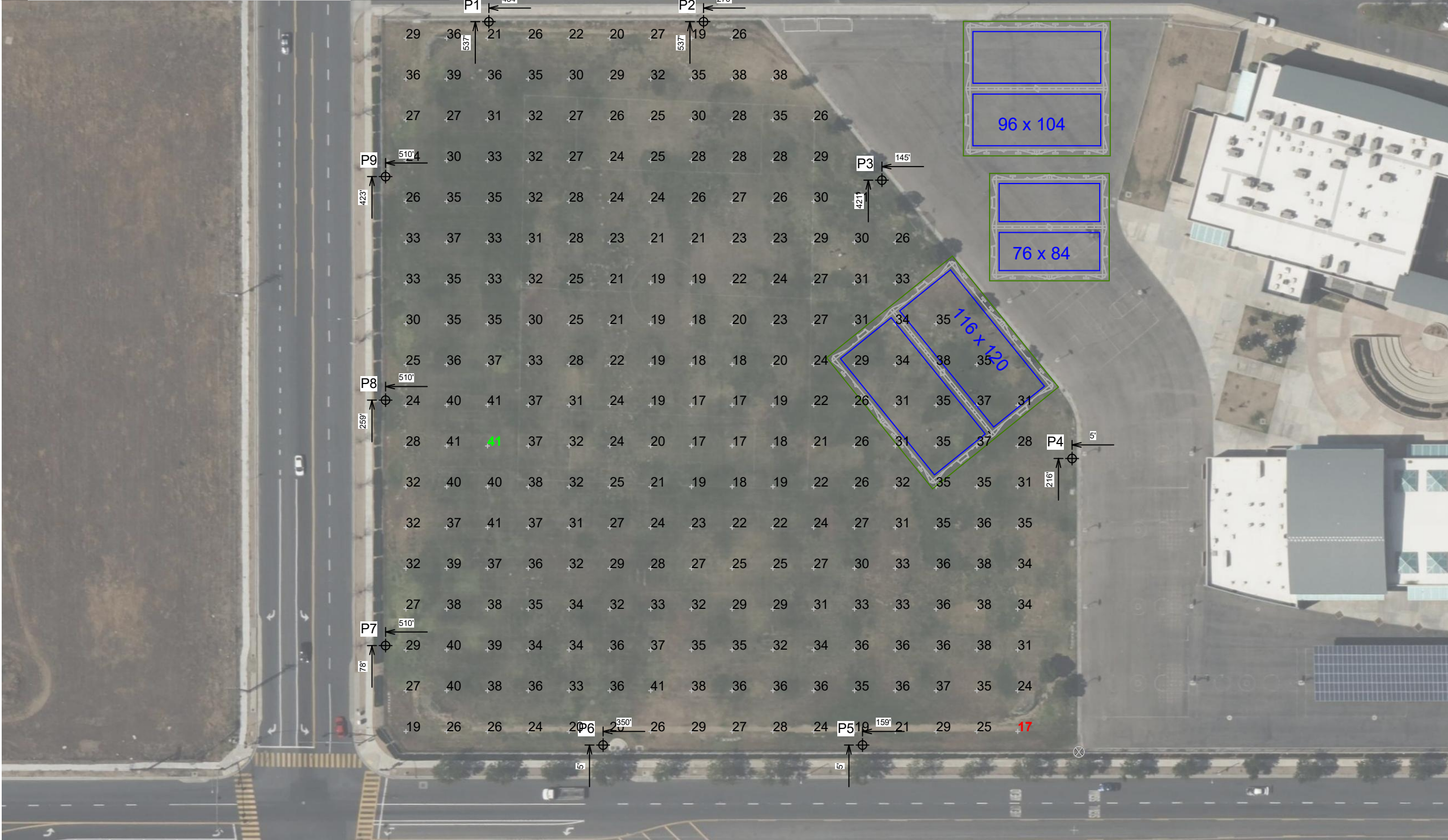
EQUIPMENT LIST FOR AREAS SHOWN									
Pole				Luminaires					
QTY	LOCATION	SIZE	GRADE ELEVATION	MOUNTING HEIGHT	LUMINAIRE TYPE	QTY / POLE	THIS GRID	OTHER GRIDS	
2	P1-P2	60'	-	60'	TLC-LED-900	5	5	0	
1	P3	80'	-	80'	TLC-LED-1500	5	5	0	
				80'	TLC-LED-400	1	1	0	
				80'	TLC-LED-900	1	1	0	
3	P4-P5, P8	80'	-	80'	TLC-LED-1500	7	7	0	
1	P6	80'	-	80'	TLC-LED-900	1	1	0	
				80'	TLC-LED-1500	6	6	0	
1	P7	80'	-	80'	TLC-LED-900	2	2	0	
				80'	TLC-LED-1500	3	3	0	
1	P9	80'	-	80'	TLC-LED-400	2	2	0	
				80'	TLC-LED-1500	4	4	0	
9	TOTALS					56	56	0	

Joe Baca Middle School

Bloomington, CA

GRID SUMMARY	
Name:	Sports Field
Size:	0' x 0'
Spacing:	30.0' x 30.0'
Height:	3.0' above grade

ILLUMINATION SUMMARY	
MAINTAINED HORIZONTAL FOOTCANDLES	
	Entire Grid
Scan Average:	29.51
Maximum:	41
Minimum:	17
Avg / Min:	1.78
Max / Min:	2.49
UG (adjacent pts):	1.87
CU:	0.88
No. of Points:	252
LUMINAIRE INFORMATION	
Applied Circuits:	A
No. of Luminaires:	56
Total Load:	69.43 kW

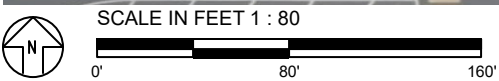


Guaranteed Performance: The ILLUMINATION described above is guaranteed per your Musco Warranty document and includes a 0.95 dirt depreciation factor.

Field Measurements: Individual field measurements may vary from computer-calculated predictions and should be taken in accordance with IESNA RP-6-15.

Electrical System Requirements: Refer to Amperage Draw Chart and/or the "Musco Control System Summary" for electrical sizing.

Installation Requirements: Results assume ± 3% nominal voltage at line side of the driver and structures located within 3 feet (1m) of design locations.



Pole location(s) ⊕ dimensions are relative to 0,0 reference point(s) ⊗



We Make It Happen.

Not to be reproduced in whole or part without the written consent of Musco Sports Lighting, LLC. ©1981, 2022 Musco Sports Lighting, LLC.

Joe Baca Middle School
Bloomington, CA

GRID SUMMARY	
Name:	Spill Grid
Spacing:	30.0'
Height:	3.0' above grade

ILLUMINATION SUMMARY	
HORIZONTAL FOOTCANDLES	
Scan Average:	Entire Grid 0.2244
Maximum:	0.76
Minimum:	0.00
No. of Points:	76
LUMINAIRE INFORMATION	
Applied Circuits:	A
No. of Luminaires:	56
Total Load:	69.43 kW

Guaranteed Performance: The ILLUMINATION described above is guaranteed per your Musco Warranty document.

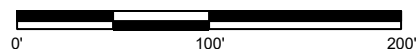
Field Measurements: Individual field measurements may vary from computer-calculated predictions and should be taken in accordance with IESNA RP-6-15.

Electrical System Requirements: Refer to Amperage Draw Chart and/or the "Musco Control System Summary" for electrical sizing.

Installation Requirements: Results assume ± 3% nominal voltage at line side of the driver and structures located within 3 feet (1m) of design locations.



SCALE IN FEET 1 : 100



Pole location(s) ⊕ dimensions are relative to 0,0 reference point(s) ⊗



We Make It Happen.

Joe Baca Middle School
Bloomington, CA

GRID SUMMARY	
Name:	Spill Grid
Spacing:	30.0'
Height:	3.0' above grade

ILLUMINATION SUMMARY	
MAX VERTICAL FOOTCANDLES	
Scan Average:	Entire Grid 0.5059
Maximum:	1.59
Minimum:	0.00
No. of Points:	76
LUMINAIRE INFORMATION	
Applied Circuits:	A
No. of Luminaires:	56
Total Load:	69.43 kW

Guaranteed Performance: The ILLUMINATION described above is guaranteed per your Musco Warranty document.

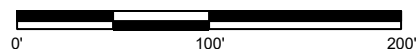
Field Measurements: Individual field measurements may vary from computer-calculated predictions and should be taken in accordance with IESNA RP-6-15.

Electrical System Requirements: Refer to Amperage Draw Chart and/or the "Musco Control System Summary" for electrical sizing.

Installation Requirements: Results assume ± 3% nominal voltage at line side of the driver and structures located within 3 feet (1m) of design locations.



SCALE IN FEET 1 : 100



Pole location(s) ⊕ dimensions are relative to 0,0 reference point(s) ⊗



We Make It Happen.

Joe Baca Middle School
Bloomington, CA

GRID SUMMARY	
Name:	Spill Grid
Spacing:	30.0'
Height:	3.0' above grade

ILLUMINATION SUMMARY	
CANDELA (PER FIXTURE)	
Scan Average:	Entire Grid 18048.1289
Maximum:	65725.19
Minimum:	201.62
No. of Points:	76
LUMINAIRE INFORMATION	
Applied Circuits:	A
No. of Luminaires:	56
Total Load:	69.43 kW

Guaranteed Performance: The ILLUMINATION described above is guaranteed per your Musco Warranty document.

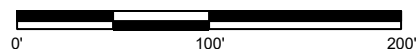
Field Measurements: Individual field measurements may vary from computer-calculated predictions and should be taken in accordance with IESNA RP-6-15.

Electrical System Requirements: Refer to Amperage Draw Chart and/or the "Musco Control System Summary" for electrical sizing.

Installation Requirements: Results assume ± 3% nominal voltage at line side of the driver and structures located within 3 feet (1m) of design locations.



SCALE IN FEET 1 : 100



Pole location(s) ⊕ dimensions are relative to 0,0 reference point(s) ⊗



We Make It Happen.

Joe Baca Middle School

Bloomington, CA

EQUIPMENT LAYOUT

INCLUDES:

· Sports Field

Electrical System Requirements: Refer to Amperage Draw Chart and/or the "Musco Control System Summary" for electrical sizing.

Installation Requirements: Results assume ± 3% nominal voltage at line side of the driver and structures located within 3 feet (1m) of design locations.

EQUIPMENT LIST FOR AREAS SHOWN

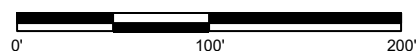
QTY	Pole			Luminaires		QTY / POLE
	LOCATION	SIZE	GRADE ELEVATION	MOUNTING HEIGHT	LUMINAIRE TYPE	
2	P1-P2	60'	-	60'	TLC-LED-900	5
1	P3	80'	-	80'	TLC-LED-1500	5
				80'	TLC-LED-400	1
				80'	TLC-LED-900	1
3	P4-P5, P8	80'	-	80'	TLC-LED-1500	7
1	P6	80'	-	80'	TLC-LED-900	1
				80'	TLC-LED-1500	6
1	P7	80'	-	80'	TLC-LED-900	2
				80'	TLC-LED-1500	3
1	P9	80'	-	80'	TLC-LED-400	2
				80'	TLC-LED-1500	4
9	TOTALS					56

SINGLE LUMINAIRE AMPERAGE DRAW CHART

Ballast Specifications (.90 min power factor)	Line Amperage Per Luminaire (max draw)						
	208 (60)	220 (60)	240 (60)	277 (60)	347 (60)	380 (60)	480 (60)
Single Phase Voltage	208 (60)	220 (60)	240 (60)	277 (60)	347 (60)	380 (60)	480 (60)
TLC-LED-1500	8.5	8.1	7.4	6.4	5.1	4.7	3.7
TLC-LED-900	5.3	5.0	4.6	4.0	3.2	2.9	2.3
TLC-LED-400	2.3	2.2	2.0	1.7	1.4	1.3	1.0



SCALE IN FEET 1 : 100



Pole location(s) ⊕ dimensions are relative to 0,0 reference point(s) ⊗



We Make It Happen.

Not to be reproduced in whole or part without the written consent of Musco Sports Lighting, LLC. ©1981, 2022 Musco Sports Lighting, LLC.